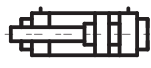
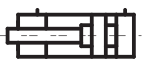
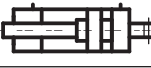
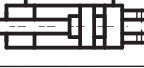

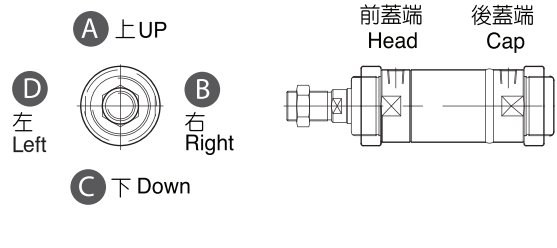


圓油油壓缸特性資料 Specification

氣壓缸內徑 Bore sizes of cylinder(mm)	Ø40	Ø50	Ø63	Ø80	Ø100	Ø125	
缸管材質 Material of cylinder barrel	鋼管 Carbon steel STKM-13C OR ST52/白鐵管 Stainless tubes SUS 304						
使用壓力範圍 The range of pressure(MPa)	0.3-14MPa(3-140kgf/cm ²) / 另有高壓可特殊訂製,請來電洽詢						
使用溫度範圍 The range of temperature(c°)	NBR/PU{-25°~+80°(C°)}/VITON{-10°~150°(C°)}						
使用速度範圍 The range of speed(mm/sec)	8~300(mm/sec)/另有低摩擦高速油封選用(1000mm以上/sec),請來電洽詢						
標準衝程活塞(PM)的長度,長衝程活塞與緊緊模式請參閱註1	30	35	35	50	60	70	
各缸徑最大容許衝程 STROKE .mm Max.Permissible	參閱有關軸心挫曲與缸體固定形式技術資料						
衝程之容許公差/Tolerance of stroke	衝程/STROKE	100 以下	100~250	250~630	631~1000	1001~1600	1601以上
JIS B 8354 B級/Refer to Right Table	容許差/Tolerance	0~+0.8	0~+1.0	0~+1.25	0~+1.4	0~+1.6	0~+1.8
活塞桿螺紋加工精度/Accuracy of Threading at Rod End	JIS 6g/6H(相當JIS 2級)						

RO-B-N-063-A-A-035-N-0100-N-N-AST000-N



1	型式 / TYPE	B: 車牙型 B: Standard type		A:平尾形型 A:HIRAO TYPE			
		C:CA型 C:CA type		CB:CB型 CB:CB TYPE			
		D: 雙軸型 D: Double-Rod type					
2	磁石/MAGNET	R: 內加磁石 (適用Ø40~Ø125) N:沒有 R: with magnet inside(Applicable to Ø40~Ø125) N:No symbol					
3	鋼徑/外徑 CYLINDER TUBES	Ø40/Ø50	Ø50/Ø60	Ø63/Ø73	Ø80/Ø95	Ø100/Ø114	Ø125/Ø140
	不銹鋼缸徑/外徑 STAINLESS TUBES	Ø40/Ø48	Ø50/Ø60	Ø63/Ø73	Ø80/Ø95	Ø100/Ø114	Ø125/Ø145
備註: 本系列鋼管與後蓋均採用焊接式做為主要連結方式 加磁石系列使用不銹鋼管與鐵製後蓋採用鎖牙式作為主要連結方式,鋼管基數會有所變化 如有其他需求歡迎來電與業務人員洽詢							
4	油封選用 SEAL SYMBOL 油封材質/Seal material	適用作動油種類 Kind of Fluid					
		一般礦物性作動油 Pertroleum-Based fluid	水乙二醇 Water-Glycol fluid	磷酸酯油 Phosphate-Ester fluid	0/W作動油 Water in oil fluid	W/O作動油 Oil in Water fluid	
		A PU Polyurethane rubber	○	×	×	△	△
		B NBR Nitrile rubber	○	○	×	○	○
C VITON Fluoro elastomer	○	×	○	○	○		
備註: 允許使用 ○ 不允許使用 × 請與我們洽詢 △ 另有其他還有特殊材質油封,歡迎來電洽詢 Note:allowable ○ unallowable × consult us △							
5	入油口位置填入 Port position	前蓋端 Head	A:上(標準型)/B:右/C:下/D:左 A:UP(Standard)/B:Right/C:Down/D:Left				 <p>A 上 UP B 右 Right C 下 Down D 左 Left</p>
		後蓋端 Cap	A:上(標準型)/B:右/C:下/D:左 A:UP(Standard)/B:Right/C:Down/D:Left				
		A=AA / B=BB / C=CC / D=DD E=AB / F=AC / G=AD / H=BA I=BC / J=BD / K=CA / L=CB M=CD / N=DA / O=DB / P=DC					

RO 圓型油壓缸採購指南

14Mpa Hydraulic Cylinders How to Order

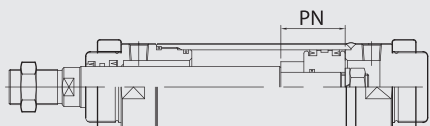
Series

6	軸心/ROD	缸徑	Ø40	Ø50	Ø63	Ø80	Ø100	Ø125
		標準	Ø20	Ø25	Ø35	Ø40	Ø50	Ø60
		最大	Ø25	Ø30	Ø40	Ø50	Ø70	Ø80
		緩衝軸心	Ø20	Ø25	Ø35	Ø40	Ø50	Ø60
7	緩衝位置 Position of cushion	N: 無緩衝(標準型) / B:兩端緩衝 / X:前蓋緩衝 / Y:後蓋緩衝 N: NO symbol/ B:Double side cushion / X:Rod-cover side cushion / Y: Cap-cover side cushion						
		備註:本系列緩衝之緩衝還經過特殊設計,使得有緩衝調整範圍加長,效果更佳優化,緩衝螺絲逆旋轉都可停止,不會產生脫落情形緩衝需加長時,型式請參閱說明2,如有疑問請洽詢						
8	行程/STROKE	填入需要之衝程 Max Permissible stroke						
備註:標準品最大衝程,內徑Ø40~Ø125衝程為1499mm,長衝程訂製時,因考量前蓋與活塞側向支撐力,另外因考量油壓缸固定形式與軸心撓曲度等等問題,需在計算強度或參閱技術資料或敬請與我們洽詢或參閱說明(1)(2)								
9	缸體 固定方式 BORE ACCESSORY	名稱 DESCRIPTION	記號 SYMBOL	略圖 CONFIGURATION	名稱 DESCRIPTION	記號 SYMBOL	略圖 CONFIGURATION	
		前蓋矩形法蘭 Rectangular flange at cylinder head	FA		後蓋矩形法蘭 Rectangular flange at cylinder cap	FB		
		前後端凸耳形 Foot mounting side end angles	LB		U型搖擺座 U-shaped swing seat	TC		
		備註:缸體固定如有其它方式可繪製圖面或與我們營業人員洽詢 Note: If the cylinder is fixed in other ways, you can draw a sketch or contact our sales staff						
10	軸心 用配件 ROD ACCESSORY	名稱 DESCRIPTION	記號 SYMBOL	略圖 CONFIGURATION	名稱 DESCRIPTION	記號 SYMBOL	略圖 CONFIGURATION	
		Y型接頭 Rod Clevis	HY		Y型接頭附插銷 Rod Clevis With Pin	YP		
		I型接頭 I Rod end mounting	HI		浮動接頭 Compensating Joint	KG		
		魚眼接頭 Oscillating Eye	PH		T型接頭 T Rod end mounting	HT		
		焊接接頭 H Rod end mounting	HH		可調螺帽 Adjustable nut	AST		
		備註:軸心固定如有其它方式,可繪製草圖或與我們營業人員洽詢 Note: If the axis is fixed in other ways, you can draw a sketch or contact our sales staff						
11	雙軸 可調行程	填入需要的可調行程 AST <input type="text"/> <input type="text"/> <input type="text"/> mm 無記號:沒有 / NO Symbol Adjustable Stroke						
12	近接開關 SENSOR SWITCH	無記號:無裝置(標準型)/B:兩端近接開關/X:近接在前/Y:近接在後/T:近接*3/U:近接*4 N: No symbol/B:Double side sensor switch/X:Rod-cover side sensor switch/ Y: Cap-cover side sensor switch/T:sensor switch*3/U:sensor switch*4						

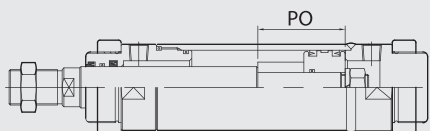
圓型油壓缸尺寸圖

14Mpa RO Series Dimensions Features

[說明1] 長衝程活塞加長襯套尺寸與緊緊模式選用參考:



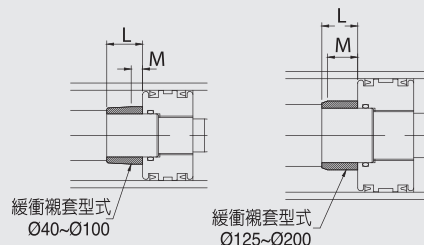
加中座模式(適用於缸徑 $\varnothing 40 \sim \varnothing 125$,行程1500以上)



兩端加法蘭模式 (建議用於缸徑 $\varnothing 40 \sim \varnothing 125$,行程2000mm以上)

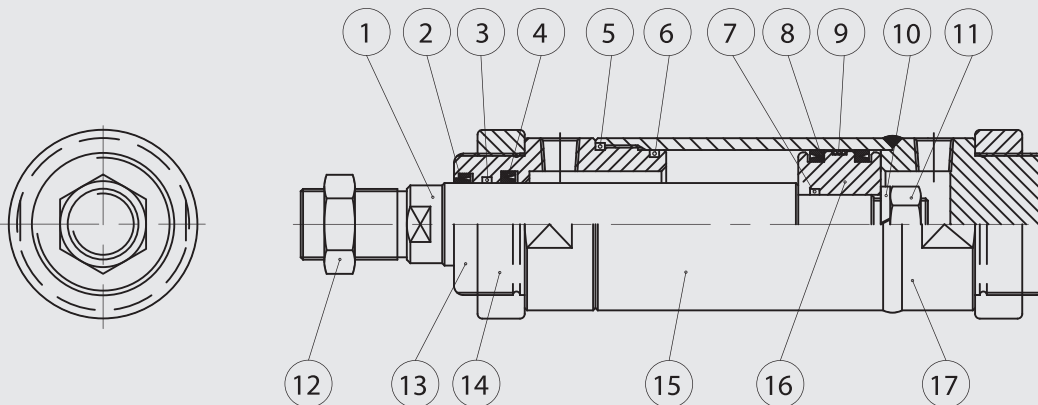
缸徑	PN	PO
$\varnothing 40$	60	90
$\varnothing 50$	70	100
$\varnothing 63$	70	100
$\varnothing 80$	100	150
$\varnothing 100$	100	150
$\varnothing 125$	100	210

[說明2] 緩衝標準距離尺寸:

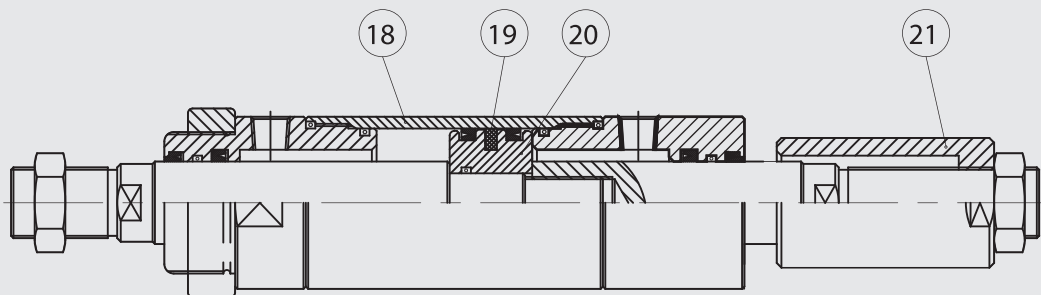


缸徑	L長度	M長度
$\varnothing 40 \sim \varnothing 63$	20	8
$\varnothing 80 \sim \varnothing 125$	25	8

ROB



RODR

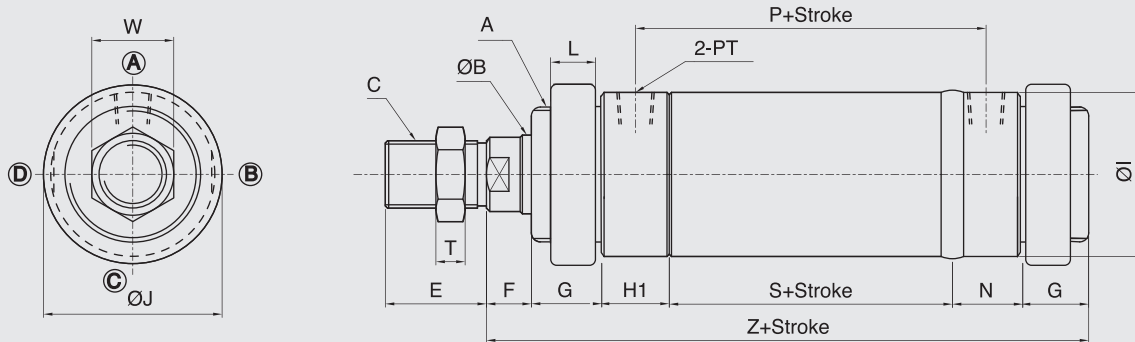


NO	零件名 Part mane	數量 Quantity	NO	零件名 Part mane	數量 Quantity	NO	零件名 Part mane	數量 Quantity
1	活塞桿 Piston rod	1	8	PU活塞環 Piston packing	2	15	缸管本體 Cylinder tube	1
2	刮油環 Dust wiper	1	9	耐磨環 Wearing ring	1	16	活塞本體 Piston	1
3	O型環 Gasket	1	10	彈簧華司 Spring washer	1	17	後蓋 End cover	1
4	軸用油封 Rod packiog	1	11	螺帽 Nut	1	18	缸管本體 Cylinder tube	1
5	O型環 Gasket	1	12	軸心螺帽 Rod nut	1	19	磁石 Magnet	1
6	O型環 Gasket	1	13	前蓋 Rod cover	1	20	活塞本體 Piston	1
7	O型環 Gasket	1	14	前蓋螺帽 Cover nut	1	21	可調螺帽 Adjustable nut	1

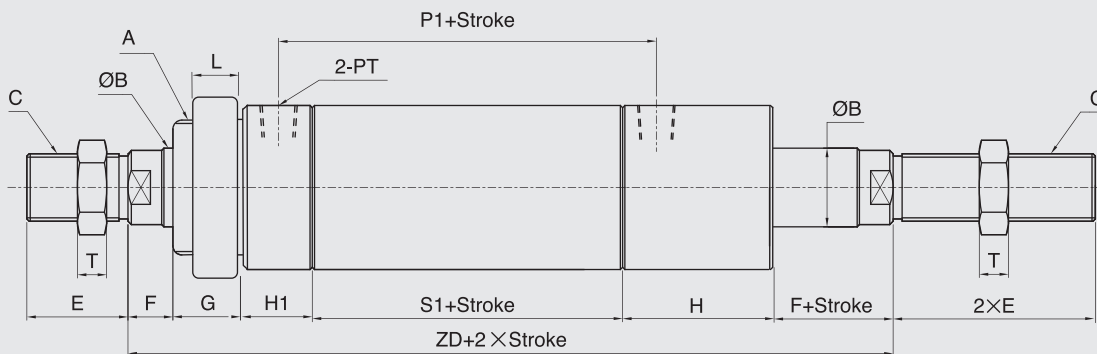
ROB, ROD Series

圓型中型油壓缸尺寸圖 14Mpa RO Series Dimensional Features

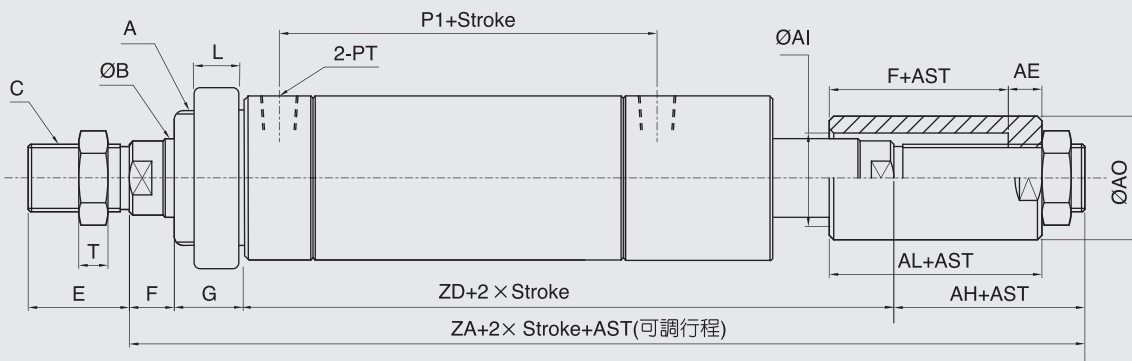
ROB RO+B(後蓋焊接式) TYPE



ROD RO+D(雙軸型) TYPE



ROD ROD+AST(雙軸型附可調帽) TYPE



ROB-ROD TYPE

A(可調帽) TYPE

BORE	SIZE	A	ØB	C	E	F	G	H	H1	ØI	J	L	N	P	P1	PM	PT	S	S1	T	W	Z	ZA	ZD	AH	AE	ØAI	ØAO	AL
Ø40	M40XP2.0	20	M16XP1.5	28	17	25	50	25	50	55	15	25	86	107	30	3/8	61	82	8	23.5	178	246	216	30	20	25	40	37	
Ø50	M50XP2.0	25	M22XP1.5	40	20	25	50	25	60	65	15	30	96	112	35	3/8	66	87	13	32	191	267	227	40	25	35	50	45	
Ø63	M60XP2.0	35	M30XP1.5	45	20	30	60	30	73	80	20	35	105	125	35	3/8	70	95	13	41	215	295	255	40	25	45	60	45	
Ø80	M70XP2.0	40	M30XP1.5	45	20	30	60	30	95	90	20	40	127.5	150	50	1/2	90	120	13	41	240	325	280	45	30	50	70	50	
Ø100	M90XP2.0	50	M40XP2.0	55	25	30	60	30	114	110	20	40	147.5	180	60	1/2	110	150	15	55	265	365	320	45	30	60	90	55	
Ø125	M120XP2.0	60	M50XP2.0	70	30	30	70	40	140	150	20	50	172.5	210	70	3/4	125	170	15	65	305	420	370	50	35	70	100	65	

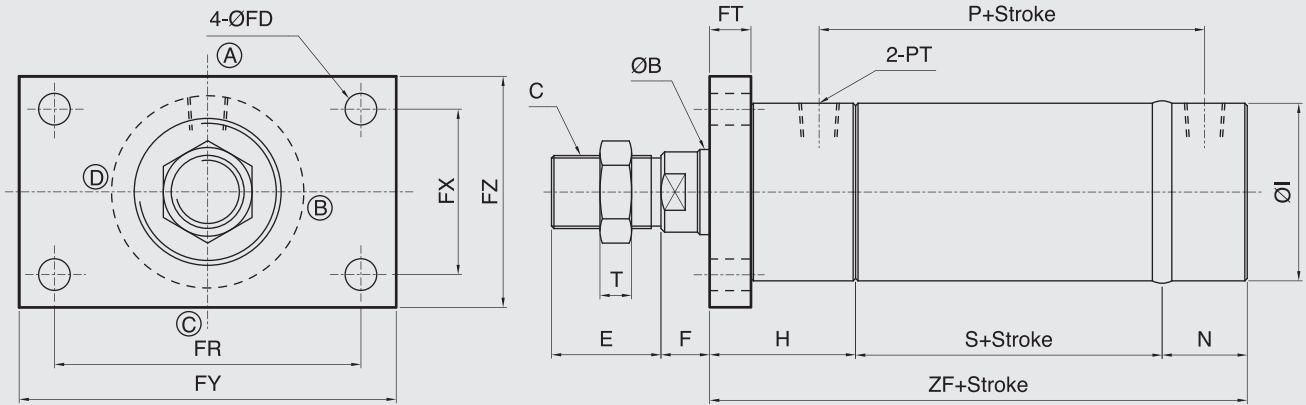
備註：

- 軸心加大或縮小時如未註明長度尺寸時,依照本公司規定自行加工。
- RO40系列行程超過 500mm以上時,軸心牙加大為M18*P1.5。
- RO系列行程未超過 1499mm時,活塞(PM)長度依據規格表組裝,行程如超過1500mm以上時,活塞長度(PM)請參閱特性資料表。
- 前蓋螺帽(ØJ)與軸心螺帽(ØW)規格大於M50時,其外徑為圓型,W,J指其外徑。
- AST為客戶指定之可調行程。

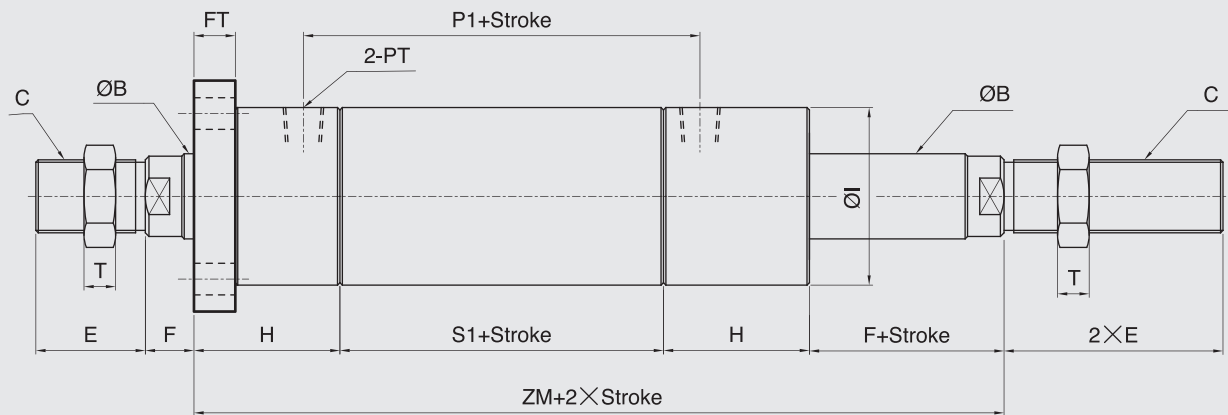
- The length and size of axis were not specific to constructed must be according to our company design's modify without prior notice.
- The series stroke exceed 500mm (includes), axletree broaden be M18xP1.5.
- When this series of stroke exceeds (includes) 1500mm, as see the property information for the length of the piston. Within 1499mm see the (PM) length of piston.
- External diameter is round (W, J), when rod cover (ØJ) and rod nut (ØW) exceed M50.
- AST: Adjustable stroke by customer assignment.

圓型中型油壓缸FA板尺寸圖 14Mpa RO Series FA Dimensional Features

ROA ROA(後平)+FA TYPE(後蓋焊接式)



ROD ROD+FA TYPE



ROB-ROD TYPE															FA TYPE								
BORE	SIZE	ØB	C	E	F	H	ØI	N	P	P1	PM	PT	S	S1	T	ZF	ZM	ØFD	FT	FR	FX	FY	FZ
Ø40	20	M16XP1.5	28	17	50	50	25	86	107	30	3/8	61	82	8	136	199	12	11	93	50	115	72	
Ø50	25	M22XP1.5	40	20	50	60	30	96	112	35	3/8	66	87	13	146	207	14	17	110	56	150	85	
Ø63	35	M30XP1.5	45	20	60	73	35	105	125	35	3/8	70	95	13	165	235	14	17	126	68	155	95	
Ø80	40	M30XP1.5	45	20	60	95	40	127.5	150	50	1/2	95	120	13	195	260	18	20	152	75	190	120	
Ø100	50	M40XP2.0	55	25	60	114	40	147.5	180	60	1/2	110	150	15	210	295	20	20	180	100	220	140	
Ø125	60	M50XP2.0	70	30	70	140	50	172.5	210	70	3/4	125	170	15	245	340	24	30	222	122	280	170	

備註:

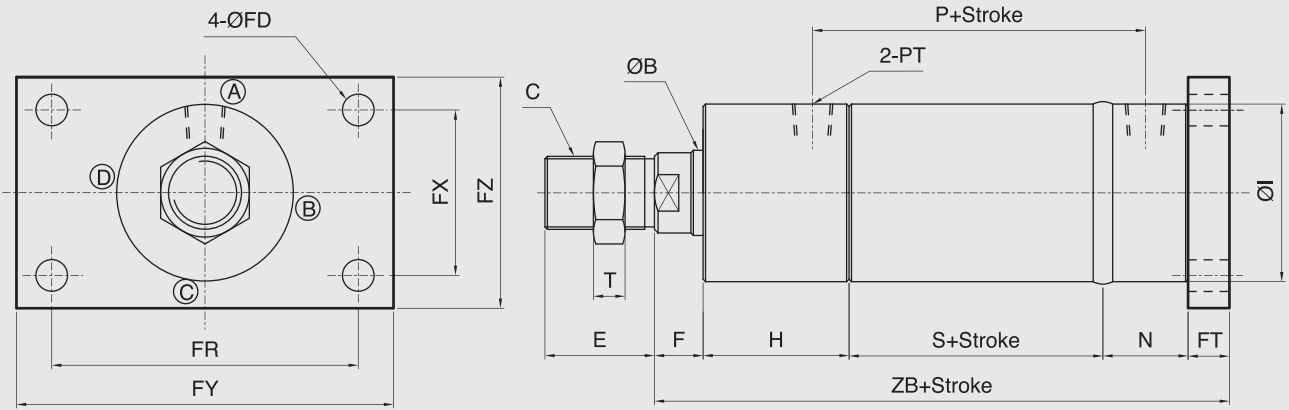
- 軸心加大或縮小時如未註明長度尺寸時,依照本公司規定自行加工。
- RO40系列行程超過 500mm以上時,軸心牙加大為M18*P1.5。
- RO系列行程未超過 1499mm時,活塞(PM)長度依據規格表組裝,行程如超過1500mm以上時,活塞長度(PM)請參閱特性資料表。
- 前蓋螺帽(ØJ)與軸心螺帽(ØW)規格大於M50時,其外徑為圓型,W,J指其外徑。

- The length and size of axis were not specific to constructed must be according to our company design's modify without prior notice.
- The series stroke exceed 500mm (includes), axletree broaden be M18xP1.5.
- When this series of stroke exceeds(includes) 1500mm, as see the property information for the length of the piston. Within 1499mm see the (PM) length of piston.
- External diameter is round (W, J),when rod cover(ØJ) and rod nut (ØW) exceed M50.

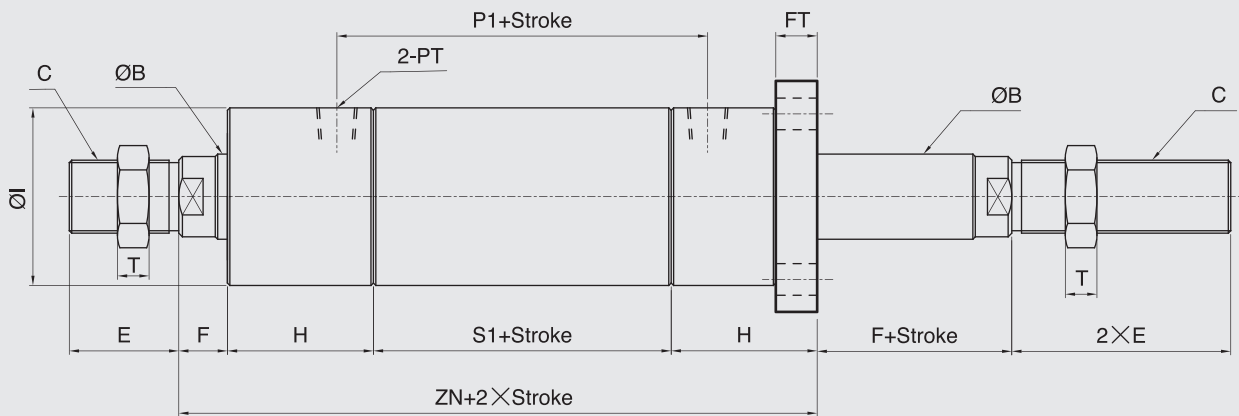
RO-FB Series

圓型中型油壓缸FB板尺寸圖 14Mpa RO Series FB Dimensional Features

ROB ROB+FB TYPE



ROD ROD+FB TYPE



ROB-ROD TYPE																	FB TYPE						
BORE	SIZE	ØB	C	E	F	H	ØI	N	P	P1	PM	PT	S	S1	T	ZB	ZN	ØFD	FT	FR	FX	FY	FZ
Ø40		20	M16XP1.5	28	17	50	50	25	86	107	30	3/8	61	82	8	164	199	12	11	93	50	115	72
Ø50		25	M22XP1.5	40	20	50	60	30	96	112	35	3/8	66	87	13	183	207	14	17	110	56	150	85
Ø63		35	M30XP1.5	45	20	60	73	35	105	125	35	3/8	70	95	13	202	235	14	17	126	68	155	95
Ø80		40	M30XP1.5	45	20	60	95	40	127.5	150	50	1/2	90	120	13	230	260	18	20	152	75	190	120
Ø100		50	M40XP2.0	55	25	60	114	40	147.5	180	60	1/2	110	150	15	255	295	20	20	180	100	220	140
Ø125		60	M50XP2.0	70	30	70	140	50	172.5	210	70	3/4	125	170	15	305	340	24	30	222	122	280	170

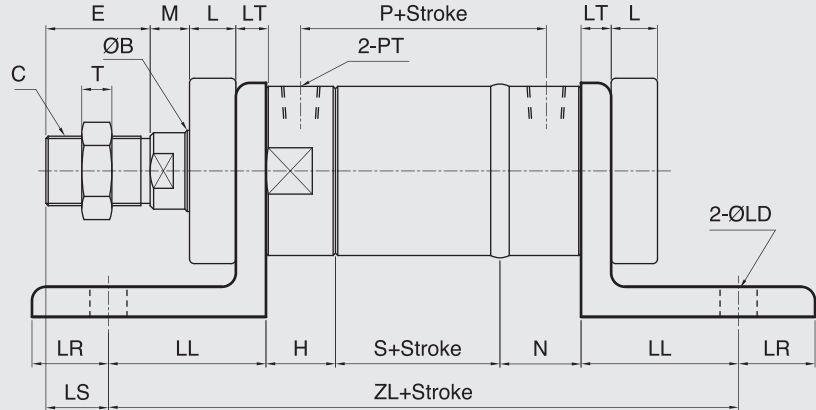
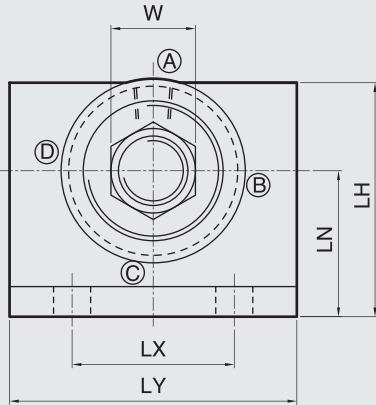
備註：

- 軸心加大或縮小時如未註明長度尺寸時,依照本公司規定自行加工。
- RO40系列行程超過 500mm以上時,軸心牙加大為M18*P1.5。
- RO系列行程未超過 1499mm時,活塞(PM)長度依據規格表組裝,行程如超過1500mm以上時,活塞長度(PM)請參閱特性資料表。
- 前蓋螺帽(ØJ)與軸心螺帽(ØW)規格大於M50時,其外徑為圓型,W,J指其外徑。

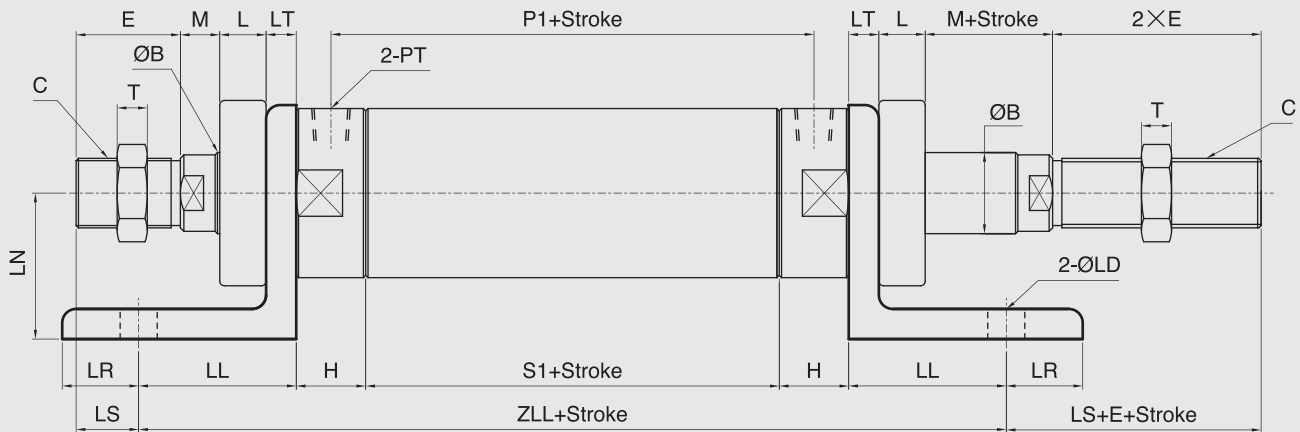
- The length and size of axis were not specific to constructed must be according to our company design's modify without prior notice.
- The series stroke exceed 500mm (includes), axletree broaden be M18xP1.5.
- When this series of stroke exceeds(includes) 1500mm, as see the property information for the length of the piston. Within 1499mm see the (PM) length of piston.
- External diameter is round (W, J),when rod cover(ØJ) and rod nut (ØW) exceed M50.

圓型中型油壓缸LB架尺寸圖 14Mpa RO Series LB Dimensional Features

ROB ROB+LB (架) TYPE



ROD ROD+LB TYPE



ROB-ROD TYPE														LB TYPE												
BORE	SIZE	ØB	C	E	M	H	N	L	LS	P	P1	PM	PT	S	S1	T	ZL	ZLL	ØLD	LH	LN	LL	LR	LT	LX	LY
Ø40	20	M16XP1.5	28	18	25	25	15	25	86	107	30	3/8	61	82	8	201	222	12	75	47	45	30	9	60	88	
Ø50	25	M22XP1.5	40	18	25	30	15	30	96	112	35	3/8	66	87	13	231	247	14	88	57	55	33	9	70	100	
Ø63	35	M30XP1.5	45	17	30	35	20	29	105	125	35	3/8	70	95	13	271	291	16	101	63	68	33	13	70	124	
Ø80	40	M30XP1.5	45	17	30	40	20	29	127.5	150	50	1/2	90	120	13	296	316	18	101	60	68	33	13	80	140	
Ø100	50	M40XP2.0	55	20	30	40	20	40	147.5	180	60	1/2	110	150	15	320	350	18	140	80	70	35	15	90	144	
Ø125	60	M50XP2.0	70	25	40	50	20	60	172.5	210	70	3/4	125	170	15	375	410	22	190	110	80	40	20	120	160	

備註：

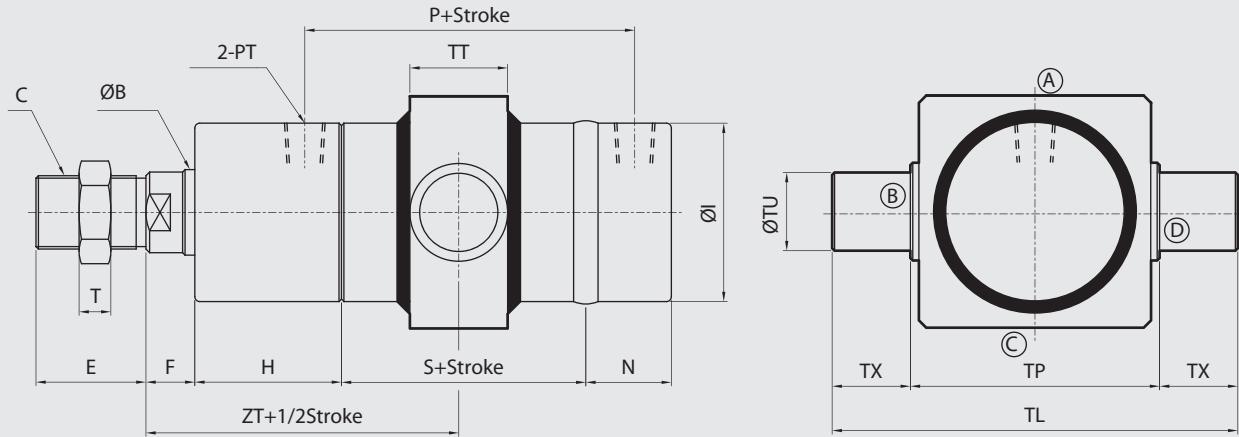
- 軸心加大或縮小時如未註明長度尺寸時,依照本公司規定自行加工。
- RO40系列行程超過 500mm以上時,軸心牙加大為M18*P1.5。
- RO系列行程超過1499mm時,活塞(PM)長度依據規格表組裝,行程如超過1500mm以上時,活塞長度(PM)請參閱特性資料表。
- 前蓋螺帽(ØJ)與軸心螺帽(ØW)規格大於M50時,其外徑為圓型,W指其外徑。

- The length and size of axis were not specific to constructed must be according to our company design's modify without prior notice.
- The series stroke exceed 500mm (includes), axletree broaden be M18xP1.5.
- When this series of stroke exceeds(includes) 1499mm, as see the property information for the length of the piston. Within 1499mm see the (PM) length of piston.
- External diameter is round (W),when rod cover(ØJ) and rod nut (ØW) exceed M50.

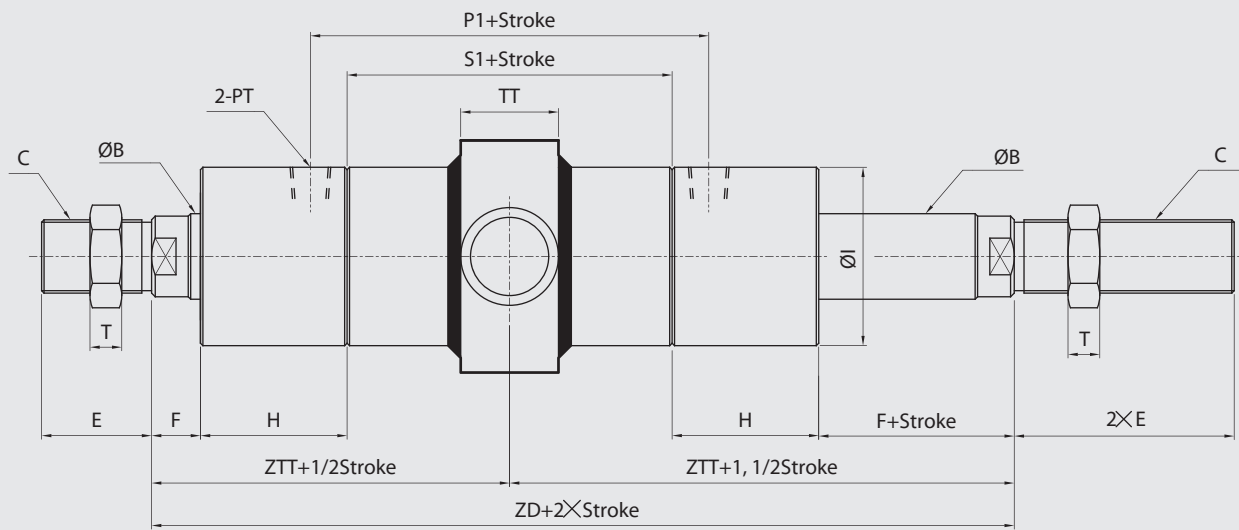
RO-TC Series

圓型中型油壓缸TC尺寸圖 14Mpa RO Series TC Dimensional Features

ROA ROA+TC TYPE



ROD ROD+TC TYPE



ROA-ROD TYPE																	TC TYPE						
BORE	SIZE	ØB	C	E	F	H	ØI	N	P	P1	PM	PT	S	S1	T	ZT	ZTT	ZD	ØTU	TL	TP	TT	TX
Ø40		20	M16XP1.5	28	17	50	50	25	86	107	30	3/8	61	82	8	97.5	108	216	20	115	75	28	20
Ø50		25	M22XP1.5	40	20	50	60	30	96	112	35	3/8	66	87	13	103	113.5	227	25	140	90	33	25
Ø63		35	M30XP1.5	45	20	60	73	35	105	125	35	3/8	70	95	13	115	127.5	255	32	166	102	40	32
Ø80		40	M30XP1.5	45	20	60	95	40	127.5	150	50	1/2	90	120	13	125	140	280	32	184	120	43	32
Ø100		50	M40XP2.0	55	25	60	114	40	147.5	180	60	1/2	110	150	15	140	160	320	40	220	140	53	40
Ø125		60	M50XP2.0	70	30	70	140	50	172.5	210	70	3/4	125	170	15	162.5	185	370	50	275	175	58	50

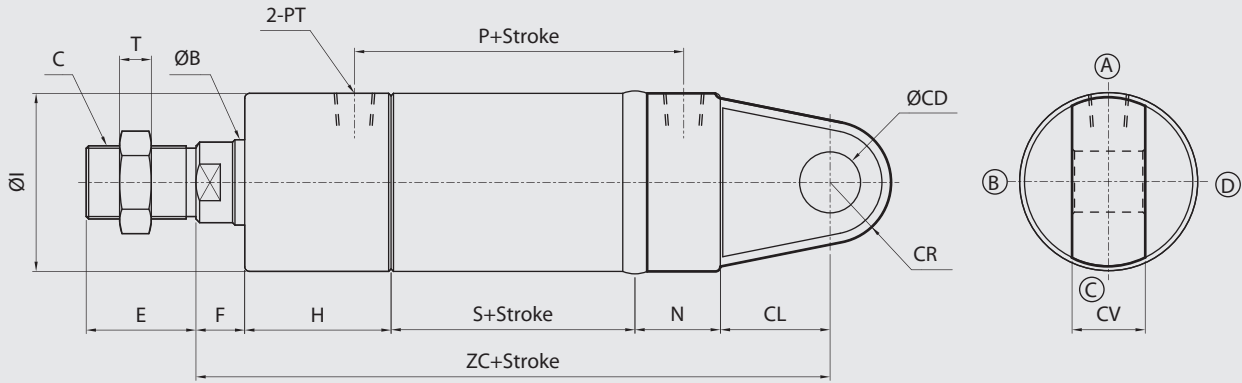
備註：

- 軸心加大或縮小時如未註明長度尺寸時,依照本公司規定自行加工。
- RO40系列行程超過 500mm以上時,軸心牙加大為M18*P1.5。
- RO系列行程超過1499mm時,活塞(PM)長度依據規格表組裝,行程如超過1500mm以上時,活塞長度(PM)請參閱特性資料表。
- 前蓋螺帽(ØJ)與軸心螺帽(ØW)規格大於M50時,其外徑為圓型,W,J指其外徑。

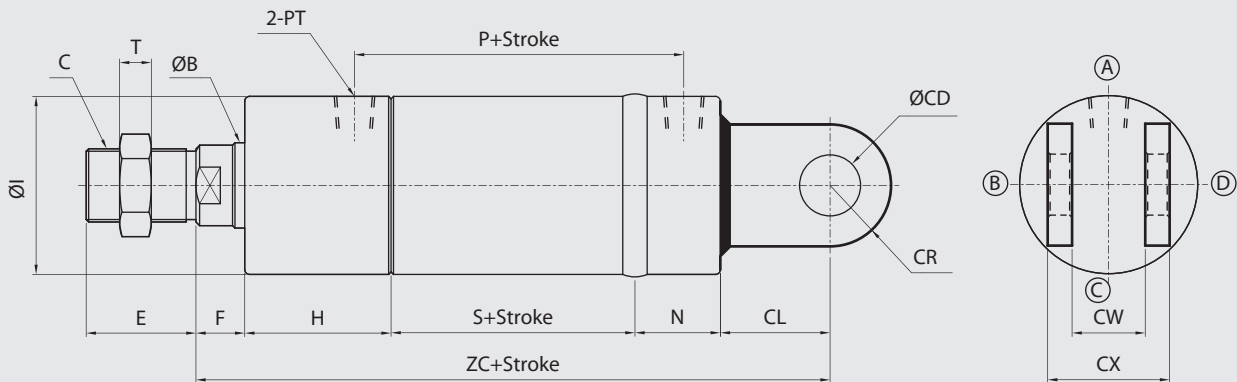
- The length and size of axis were not specific to constructed must be according to our company design's modify without prior notice.
- The series stroke exceed 500mm (includes), axletree broaden be M18xP1.5.
- When this series of stroke exceeds(includes) 1500mm, as see the property information for the length of the piston. Within 1499mm see the (PM) length of piston.
- External diameter is round (W, J),when rod cover(ØJ) and rod nut (ØW) exceed M50.

圓型中型油壓缸CA,CB尺寸圖 14Mpa RO Series CA,CB Dimensional Features

ROC ROC TYPE



ROCB ROCB TYPE



RO TYPE														CA,CB TYPE						
BORE	SIZE	$\varnothing B$	C	E	F	H	$\varnothing I$	N	P	PM	PT	S	T	ZC	$\varnothing CD$	CL	CR	CV	CW	CX
$\varnothing 40$	20	M16XP1.5	28	17	50	50	25	86	30	3/8	61	8	178	16	25	18	25	26	41	
$\varnothing 50$	25	M22XP1.5	40	20	50	60	30	96	35	3/8	66	13	201	20	35	25	25	26	46	
$\varnothing 63$	35	M30XP1.5	45	20	60	73	35	105	35	3/8	70	13	230	25	45	30	30	31	56	
$\varnothing 80$	40	M30XP1.5	45	20	60	95	40	127.5	50	1/2	90	13	260	30	50	30	35	36	66	
$\varnothing 100$	50	M40XP2.0	55	25	60	114	40	147.5	60	1/2	110	15	295	35	60	35	40	41	81	
$\varnothing 125$	60	M50XP2.0	70	30	70	140	50	172.5	70	3/4	125	15	345	50	70	50	55	56	106	

備註：

- 1.軸心加大或縮小時如未註明長度尺寸時,依照本公司規定自行加工。
- 2.RO40系列行程超過500mm以上時,軸心牙加大為M18*P1.5。
- 3.RO系列行程超過1499mm時,活塞(PM)長度依據規格表組裝,行程如超過1500mm以上時,活塞長度(PM)請參閱特性資料表。
- 4.前蓋螺帽(\varnothing)與軸心螺帽($\varnothing W$)規格大於M50時,其外徑為圓型,W,J指其外徑。

- 1.The length and size of axis were not specific to be constructed must be according to our company design's modify without prior notice.
- 2.The series stroke exceed 500mm (includes), axletree broaden be M18xP1.5.
- 3.When this series of stroke exceeds (includes) 1500mm, as see the property information for the length of the piston. Within 1499mm see the (PM) length of piston.
- 4.External diameter is round (W, J), when rod cover ($\varnothing J$) and rod nut ($\varnothing W$) exceed M50.